



2055 SANYO AVENUE, SAN DIEGO, CA

OFFICE SUITES FROM 2,293 - 9,346 SF
AVAILABLE FOR LEASE

- 4/1,000 s.f. parking
- Onsite Cafe
- Corporate office setting
- Highly visible from SR-905 and SR-11 freeways
- Excellent location: 1/4 mile to Otay Mesa Port of Entry with direct access to SR-905 and SR-11
- Adjacent to Amazon's new 3.2m SF facility
- Fully fenced, secured site with onsite security

RENTAL RATE

\$1.50 NNN* PSF

NNN = \$0.19 psf

*includes electricity

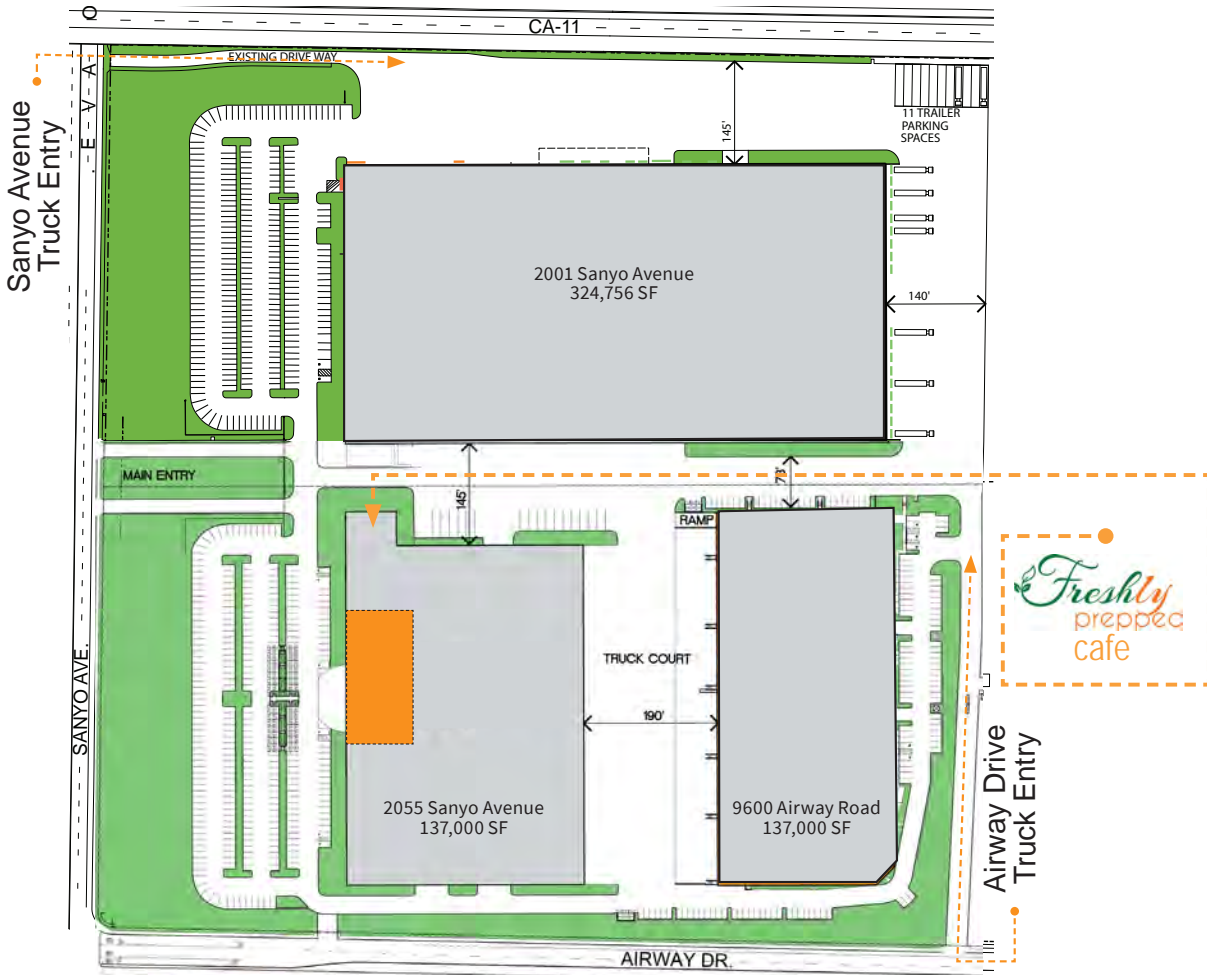


Jones Lang LaSalle
Brokerage, Inc.
RE License #01856260

Andy Irwin
858.410.6376
andy.irwin@am.jll.com
RE License # 01302674

Joe Anderson
858.410.6360
j.anderson@am.jll.com
RE License # 01509782


SITE PLAN



 Available

ACCESSIBLE LOCATION

 Direct freeway access

 1/4 mile from Otay Mesa Port of Entry

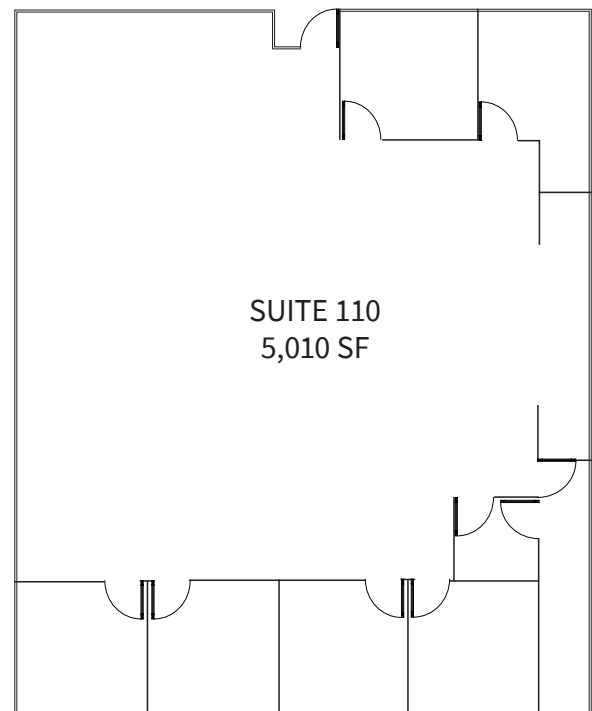
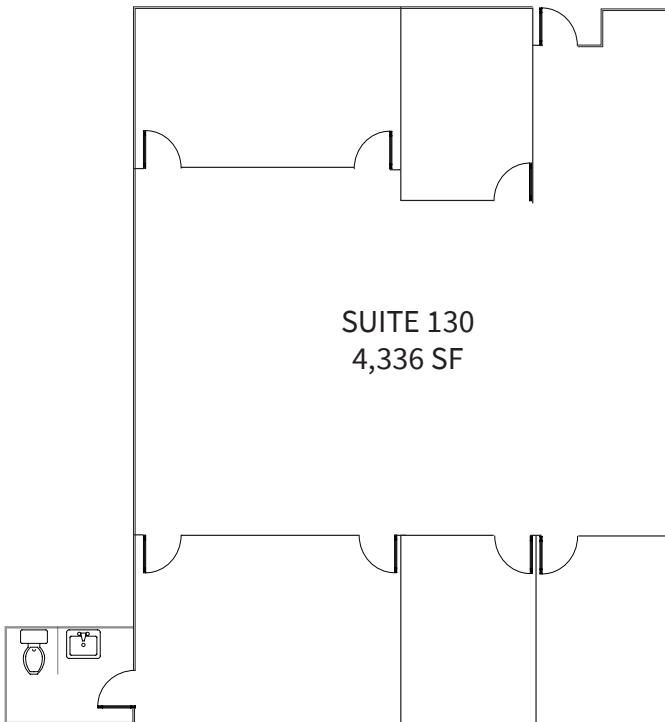
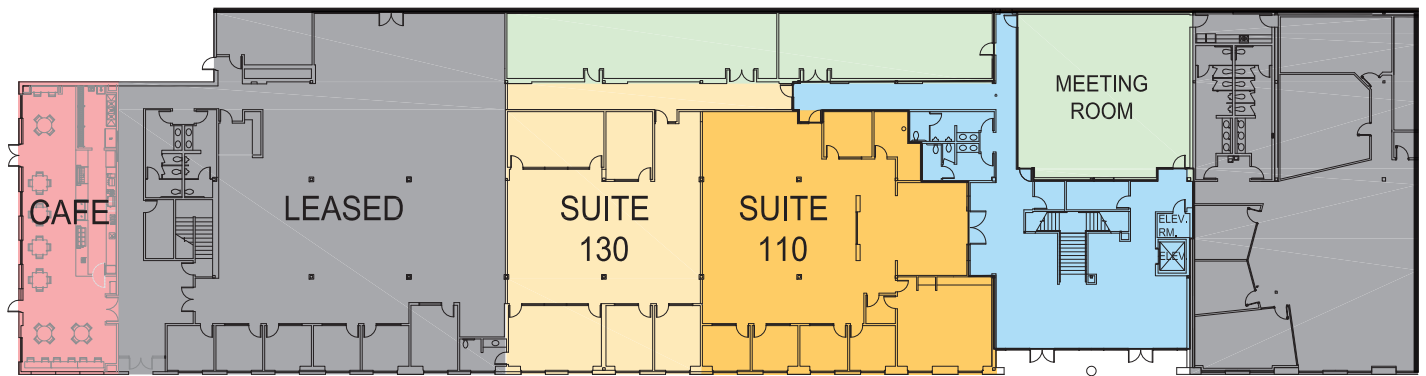
 Reverse commute during rush hours

FIRST FLOOR

Available Office
4,336 - 9,346 s.f.

 Lobby & Common Areas

 Additional Space

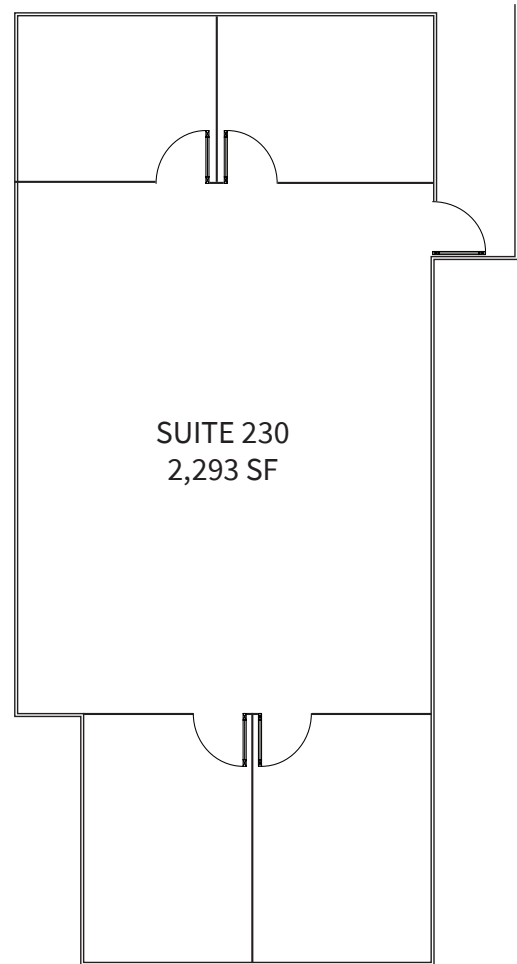
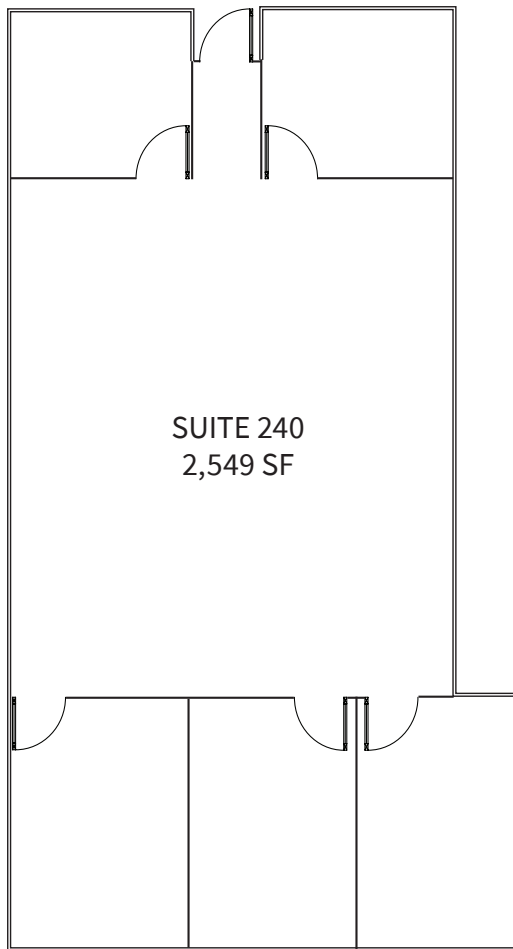
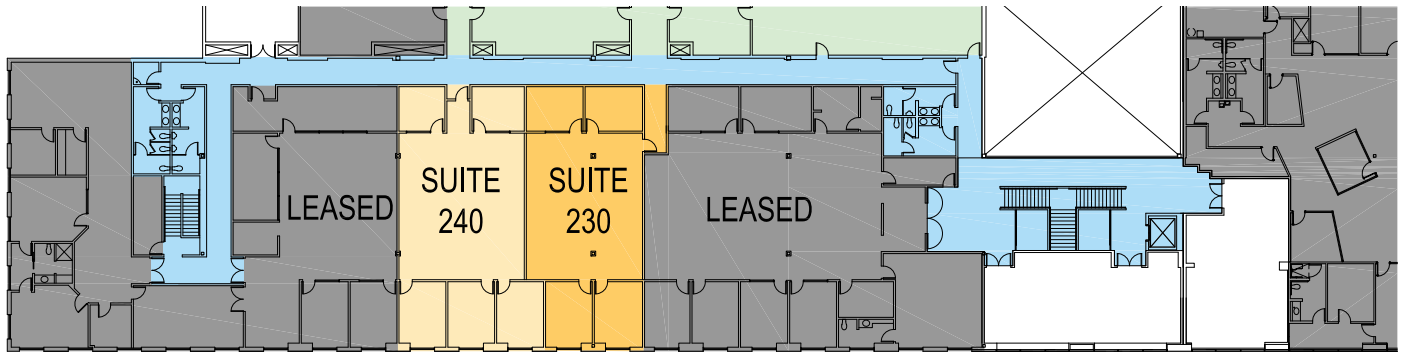


SECOND FLOOR

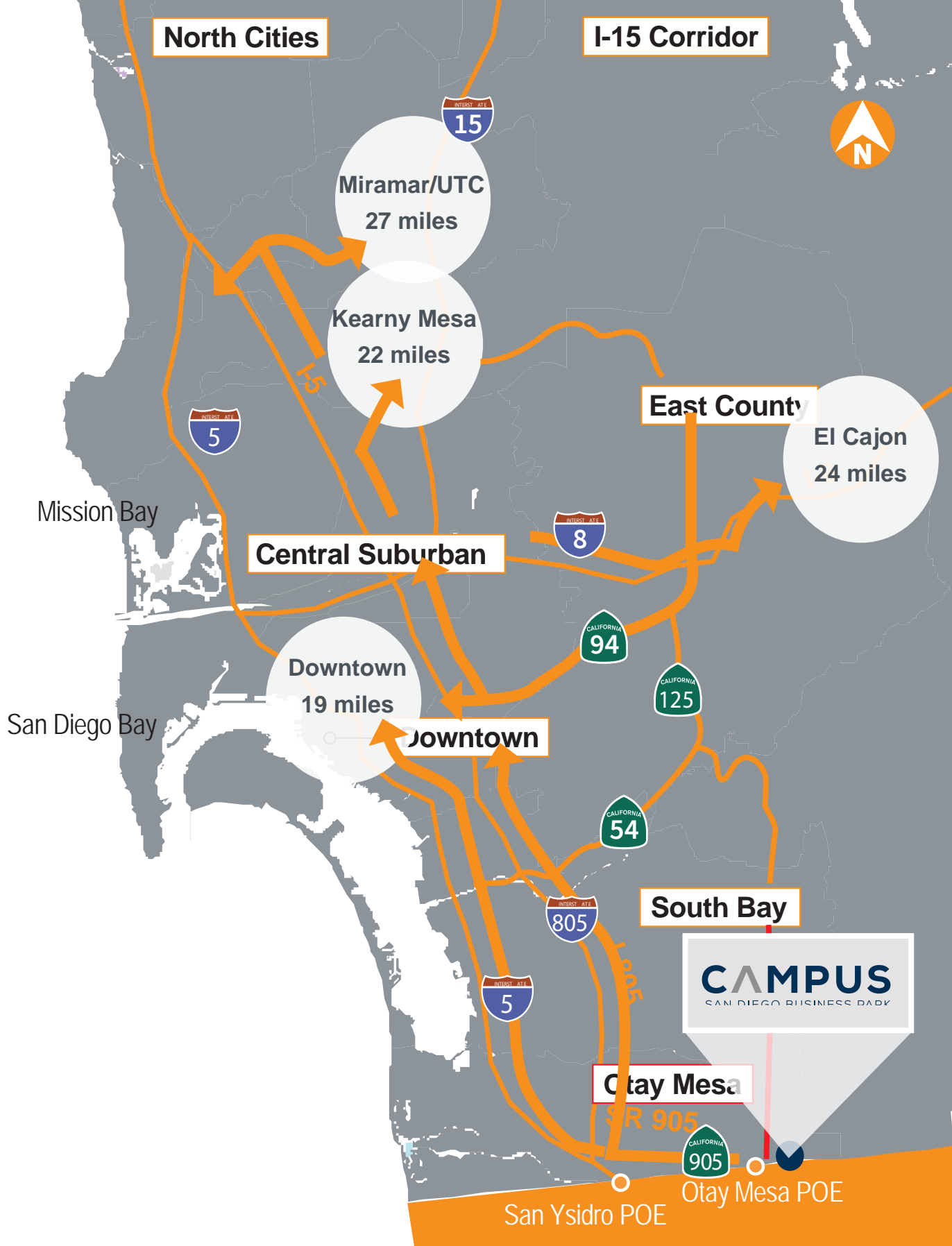
Available Office
2,293 - 4,842 s.f.

 Lobby &
Common Areas

 Additional Space







Jones Lang LaSalle
 Brokerage, Inc.
 RE License #01856260

Andy Irwin
 858.410.6376
 andy.irwin@am.jll.com
 RE License # 01302674

Joe Anderson
 858.410.6360
 j.anderson@am.jll.com
 RE License # 01509782



Murphy
Development Company

Although information has been obtained from sources deemed reliable, neither Owner nor JLL makes any guarantees, warranties or representations, express or implied, as to the completeness or accuracy as to the information contained herein. Any projections, opinions, assumptions or estimates used are for example only. There may be differences between projected and actual results, and those differences may be material. The Property may be withdrawn without notice. Neither Owner nor JLL accepts any liability for any loss or damage suffered by any party resulting from reliance on this information. If the recipient of this information has signed a confidentiality agreement regarding this matter, this information is subject to the terms of that agreement. ©2018. Jones Lang LaSalle IP, Inc. All rights reserved.



Jones Lang LaSalle
Brokerage, Inc.
RE License #01856260

Andy Irwin
858.410.6376
andy.irwin@am.jll.com
RE License # 01302674

Joe Anderson
858.410.6360
j.anderson@am.jll.com
RE License # 01509782